

Directions to Our Office

The USA office of Digital Identification Solutions is located approximately 7 miles southwest of downtown Greenville, South Carolina.

From Charlotte: Travel south on Interstate 85 and take SC exit 42, I-185 south towards Columbia. Take the first exit off I-185 (exit #12, which is before any toll booths). At the end of the exit ramp, turn right onto SC-153 towards Easley, and look for the Kiowa office park entrance on your left about ¼ mile at the top of the hill.

From Atlanta: Travel north on Interstate 85 and take SC exit 40 and turn right at the end of the exit ramp onto SC-153. The entrance to the Kiowa office park is located about ½ mile later on your right.

From Columbia: If headed north on I-385, take I-185 towards Atlanta, then, after two toll booth stops, take exit #12 for SC-153 towards Easley. Keep right and turn right at the end of the exit ramp, and the entrance to the Kiowa office park will be on your left about ¼ of a mile later at the top of the hill.

Our address is: **111 Kiowa Lane, Piedmont, SC 29673**

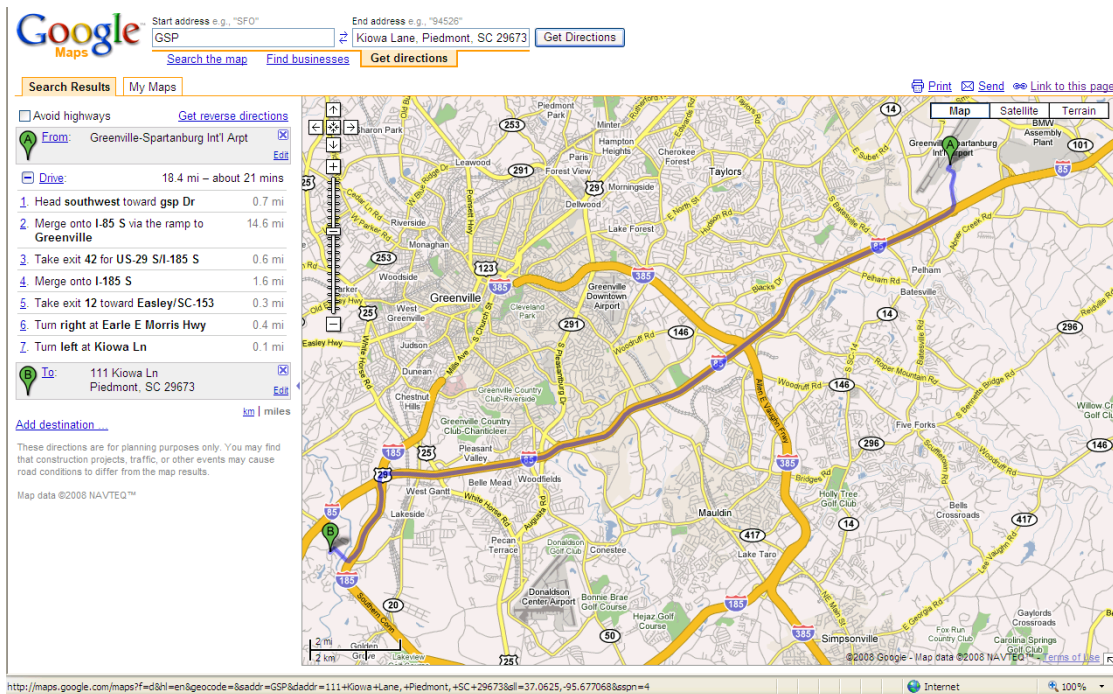
Our main phone is: **864-272-1199**

Airports

The [Greenville-Spartanburg Airport](#) is located about 18 miles northeast of our office (use SC exit 57 off Interstate 85). The airport code is **GSP**. Allow about 25 minutes from door to door. Alternatively, you can fly into Charlotte, NC (**CLT**) or Atlanta, GA (**ATL**). If you fly into Charlotte, allow about an hour and 45 minutes to drive to our office, plus a ½ hour or so to rent or return a car. If you fly into Atlanta, allow about two and ½ hours to drive to our office and about another ½ hour to rent or return a car. The latter estimate assumes you avoid driving through Atlanta during rush hour. The map below shows the route from the GSP airport to our office.

Maps

[Google Maps](#), [Mapquest](#) and [Yahoo Maps](#) show Kiowa Lane, the street on which our office is located. However, not all mapping services and GPS units do. If your GPS cannot find Kiowa Lane, try **100 Cooper Road, Piedmont, SC 29673**, which will get you close to the Kiowa office park.



Hotels

If the prices fit within your budget, we recommend staying in downtown Greenville due to the abundance of good restaurants, nightclubs and other entertainment options within easy walking distance. Downtown Greenville is a surprisingly nice place to stay. However, if you're looking for a good value on clean, close accommodations, the first hotel shown below is our recommendation.

| Hotel Name | Sample Rates* | Area | Distance to DIS | Hotel Address & Phone # | Comments | Free High Speed Internet |
|--|--|--------------------------------|-----------------|---|--|--------------------------|
| Best Western Piedmont Inn & Suites | \$68-\$90 (\$68 is Adv. Pchs. Rate) | Piedmont (Exit 40 off I-85) | About 1 mile | 70 Kalyns Way Piedmont, SC 29673 (864) 552-1420 | New hotel as of August 2009. Very convenient to DIS office with full breakfast. Behind Cracker Barrel. | Yes |
| Super 8 Motel | \$47-55 (\$47 is Adv. Pchs. Rate) | Piedmont (Exit 40 off I-85) | About 1 mile | 3104 Hwy. 153 Piedmont, SC 29673 (864) 220-1836 | Budget hotel and very close to our office. Cracker Barrel and mostly fast food nearby. | Yes |
| Hampton Inn | \$105 | Easley, SC | About 7 miles | 8 Southern Center Ct. Easley, SC 29640 (864) 343-3636 | Easy drive to our office. Several good restaurants nearby (Copper River, Outback, Fatz, Applebee's). | Yes |
| Courtyard Greenville Downtown | \$151 - \$179 (\$151 is AAA Rate) | Downtown Greenville | About 7 miles | 50 West Broad St. Greenville, SC 29601 (864) 451-5700 | The newest hotel in downtown Greenville. Many good restaurants close by. | Yes |
| Hampton Inn & Suites | \$149 - \$159 (\$127 Adv. Purchase) | Downtown Greenville | About 7 miles | 171 Riverplace Greenville, SC 29601 (864) 271-8700 | Newer hotel in downtown Greenville, and well above average quality for brand. | Yes |
| Westin Poinsett | \$139 - \$159 | Downtown Greenville | About 7 miles | 120 South Main St. Greenville, SC 29601 (864) 421-9700 | Older, historical landmark hotel that has been updated. Located in the heart of downtown. | No |
| Hyatt Regency Greenville | \$127 - \$149 (\$127 is Adv. Pchs.) | Downtown Greenville | About 8 miles | 220 North Main St. Greenville, SC 29601 (864) 235-1234 | Perhaps below average for Hyatt, but still very nice. Located at north end of downtown. | No |
| TownePlace Suites | \$84- \$104 | Haywood Mall | About 9 miles | 75 Mall Connector Rd. Greenville, SC 29607 (864) 675-1670 | Near a mall with lots of dining and shopping options. | Yes |
| Courtyard Marriott | \$109 - \$129 (\$109 is Adv. Pchs.) | Haywood Mall | About 10 miles | 70 Orchard Park Dr. Greenville, SC 29615 (864) 234-0300 | Near a mall with lots of dining and shopping options. | Yes |

* All sample rates are for a standard room and exclude taxes. There is a daily charge for parking for the hotels in "Downtown Greenville." The parking charge is about \$6 to \$8 per day.

Info in this document last revised on: June 2, 2010